



WINNIPEG
HUMANE SOCIETY



EDUCATION PROGRAMS GUIDE



SHELTER WELFARE DIGNITY

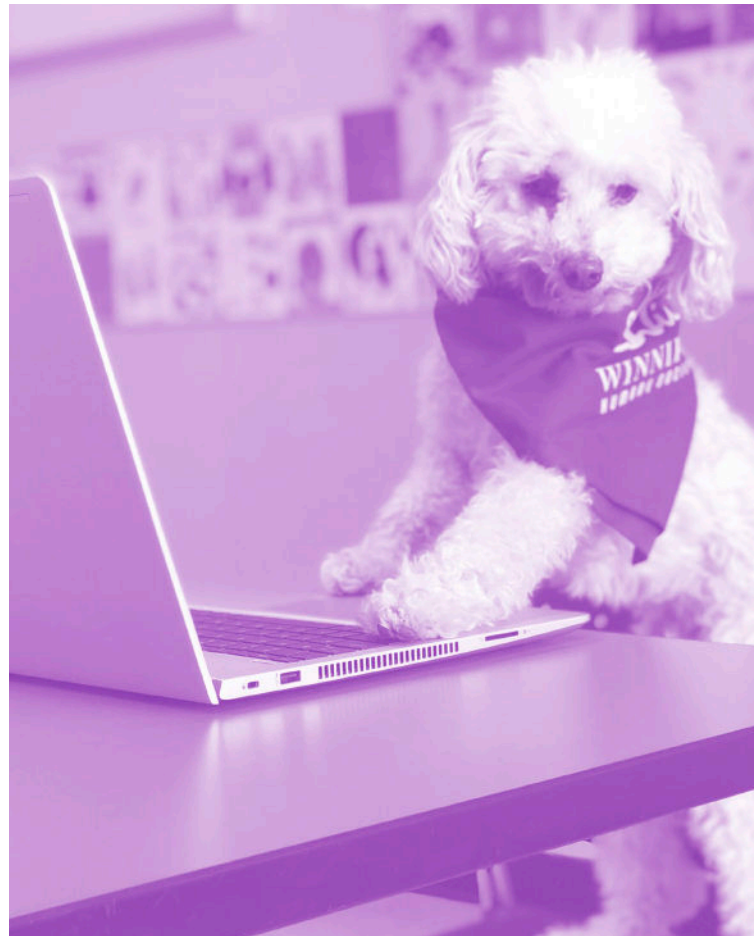
SINCE 1894

INTERACTIVE, CURRICULUM-BASED & FUN!

OUR PROGRAMS HAVE IT ALL

Nothing brings a classroom to life like a Winnipeg Humane Society interactive program!

Our in-school educational programs are based on the Manitoba curriculum and developed to be highly engaging and fun!



“The Pet Empathy program has been a special and unique experience during which my students have had the opportunity to interact with their new furry friend, Joey, a Winnipeg Humane Society behaviour assessed dog. Through the presentations and discussions, my students have developed a deeper understanding of empathy towards animals and people. Covering topics such as basic and emotional needs, personal space, conflict, stress, self-care of people and animals and loss. It has been a very beneficial learning experience for my students and me!”

HAYSTYNA TOWELLS , Robert Browning School



TABLE OF CONTENTS

WHS IN YOUR SCHOOL

PG 5 / 6 / 7 **EARLY YEARS**

- Dog Safety
- Farm Animals
- Wild Animals and Domestic Animals
- Animal Needs and Their Characteristics
- How Animals Grow and Change
- How Animals Use Plants
- Animal Habitats

PG 8 / 9 **MIDDLE YEARS**

- How Weather Affects Animals
- Diversity of Living Things
- Animal Welfare Issues
- Farm Animal Welfare

PG 10 **SENIOR YEARS**

- Factory Farming
- Problems Facing Wild Animals and Exotic Pets

PG 11 **FIELD TRIPS**

PET EMPATHY & PET THERAPY

PG 11 **PET EMPATHY**

- Basic and Emotional Needs of People and Animals
- Personal Space
- Conflict
- Stress
- Selfcare of People and Animals
- Loss

PG 12 **SEE SPOT READ**



WHS IN YOUR SCHOOL

EARLY YEARS

WILD ANIMALS AND DOMESTIC ANIMALS

An introduction to animals, both wild and pets! Students will learn which animals are wild, and which live with humans. Through fun activities, discussion and group work, this presentation is a great introduction to animals and common pets.

Length: 30 min

Price: \$45.00/group

In Your Classroom: max. 30 students

ANIMAL NEEDS AND THEIR CHARACTERISTICS

Grade 1 students will learn how similar to our animal friends we really are. Students will also discuss what animals need to be happy and healthy, while comparing those to the needs of humans.

Length: 45 min

Price: \$45.00/group

In Your Classroom: max. 30 students

HOW ANIMALS GROW AND CHANGE

Students will discover all the changes that animals go through from birth to adulthood. They will learn why some animals grow more quickly than others, as well as find out why animals have unique adaptations that help them to survive. We will look at some specific examples of the changes animals face and compare those to the changes humans experience.

Length: 45 min

Price: \$45.00/group

In Your Classroom: max. 30 students



Book Today! 204-982-2046 | education@winnipeghumanesociety.ca





HOW ANIMALS USE PLANTS

Wild animals and your pets at home use plants throughout the year. Animals in the wild use them for food and shelter, while your pet might use them to play or hide. As the seasons change, so do animals. Food that was abundant in summer is scarce in winter; we will examine what animals do in the winter to survive and how we can see some of these changes in our pets at home.

Length: 60 min

Price: \$45.00/group

In Your Classroom: max. 30 students

ANIMAL HABITATS

Students will learn the differences between wild and domesticated animals, and what their various needs are. We will discuss the impact humans have on different animal habitats, and how this directly affects the animals. We will also consider what we can do to help endangered animals and discuss ways that students can help preserve animal habitats.

Length: 60 min

Price: \$45.00/group

In Your Classroom: max. 30 students



WHS IN YOUR SCHOOL

MIDDLE YEARS

HOW WEATHER AFFECTS ANIMALS

How do humans cope with extreme weather? How do various animals cope with extreme weather? By the end of this presentation, students will know how animals adapt to extreme weather conditions, how to prepare their pets for weather emergencies, and why certain animals thrive in the climates they do.

Length: 60 min

Price: \$45.00/group

In Your Classroom: max. 30 students

DIVERSITY OF LIVING THINGS

Which animals make good pets? This presentation focuses on the key differences between wild and domesticated animals. Students will be introduced to terminology like instincts, behaviour, vertebrates, invertebrates, adaptability, and more. Students will learn why certain animals make excellent pets, while others don't. Through interactive activities, students will also learn how human behavior has a direct impact on the lives of wild animals.

Length: 60 min

Price: \$45.00/group

In Your Classroom: max. 30 students



Book Today! 204-982-2046 | education@winnipeghumanesociety.ca





WHS IN YOUR SCHOOL

MIDDLE YEARS

ANIMAL WELFARE ISSUES

Animal welfare is a multifactorial concept, with many different aspects to consider. This presentation introduces students to the concept of animal welfare, while discussing the fundamental basics that animals need in order to have a quality of life. The presentation also highlights a select few animal welfare issues such as puppy mills, livestock transport, and more.

Length: 60 min

Price: \$45.00/group

In Your Classroom: max. 30 students

FARM ANIMAL WELFARE

What do today's modern farms look like? How are animals treated on these farms? This non-graphic presentation will answer the above questions as well as discuss the impact that industrialized farming has on the animals and our environment.

Length: 60 min

Price: \$45.00/group

In Your Classroom: max. 30 students



WHS IN YOUR SCHOOL

SENIOR YEARS

FACTORY FARMING

Where does your food come from? We often fail to consider the steps involved in the process of putting food on our plates, or how farm animals are treated in the process. This non-graphic presentation focuses on common farming practices within Manitoba, farm animal welfare, and the different choices we can make as consumers.

Length: 60 min

Price: \$45.00/group

In Your Classroom: max. 30 students

PROBLEMS FACING WILD ANIMALS AND EXOTIC PETS

In this presentation students are introduced to common welfare concerns involving wild animals globally, such as the ivory trade and illegal poaching. Students will have a clear understanding of the key differences between exotic animals and exotic pets. Students will also learn of the welfare implications of owning exotic pets and which species are currently prohibited in the city of Winnipeg. Through interactive discussions, students will learn the various ways in which they can help exotic and wild animals across the globe.

Length: 60 min

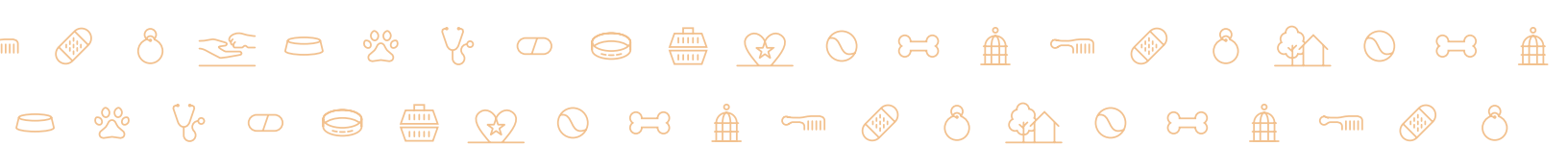
Price: \$45.00/group

In Your Classroom: max. 30 students



Book Today! 204-982-2046 | education@winnipeghumanesociety.ca





FIELD TRIPS

WHS IN YOUR SCHOOL

Pair any presentation with a WHS tour for your very own field trip! All presentations are available at the Winnipeg Humane Society and includes a tour of the facility and animal interactions.* A field trip of the WHS is an excellent way for students to get a better understanding of how animals interact with people, as well as providing great learning experiences.

Length: 120 min

Price: \$150.00/group

In-shelter: max. 30 students

*Animal interactions at the Winnipeg Humane Society are contingent on the availability of appropriate animals at the time of school visit. The WHS is a high-stress environment for the animals in our care, so following the rules that the tour guides and other staff give out is vital for all visitors and the animals themselves.



PET EMPATHY

Our Pet Empathy program is a unique, small group setting where students interact with a Winnipeg Humane Society behaviour assessed dog in order to foster a better understanding of empathy towards animals and people. The program offers six (6) specialized sessions which can be taken consecutively or individually. This is an excellent resource for students who could benefit from sessions focusing on topics such as basic and emotional needs, personal space, conflict, stress, selfcare of people and animals, and loss.

Length: 60 min

Price: \$45.00/group per session

In Your Classroom: max. 30 students

PET THERAPY

Pet Therapy is an animal-assisted pet therapy program using WHS behaviour assessed dogs to provide affection and comfort to people with a variety of needs and conditions who would benefit from the support and attention of a trained animal. These dogs help students with physical, mental, and behavioural needs to make closer connections with animals based on the reported benefits of these types of therapy practices.

Length: 60 min

Price: \$45.00/group per session

In Your Classroom: max. 30 students

Book Today! 204-982-2046 | education@winnipeghumanesociety.ca





SEE SPOT READ

The See Spot Read program is a unique partnership between the Winnipeg Humane Society and the Winnipeg Public Library. It is designed to provide a motivating, non-judgemental environment for elementary students who may be experiencing difficulties with reading, and is effective in reducing stress and anxiety some students feel when reading aloud. Students will be partnered up with a behaviour assessed WHS Dog Ambassador and will be given a safe space to practice their reading confidence without any perceived judgement. Animal reading programs have had a documented positive benefit on confidence building. The See Spot Read program has limited spots and runs for 10-week sessions (1 x week) every fall, winter, and spring. Contact us today to register your school!

Length: 60 min

Price: FREE

In-shelter/Winnipeg Public Library



Book Today! 204-982-2046 | education@winnipeghumanesociety.ca

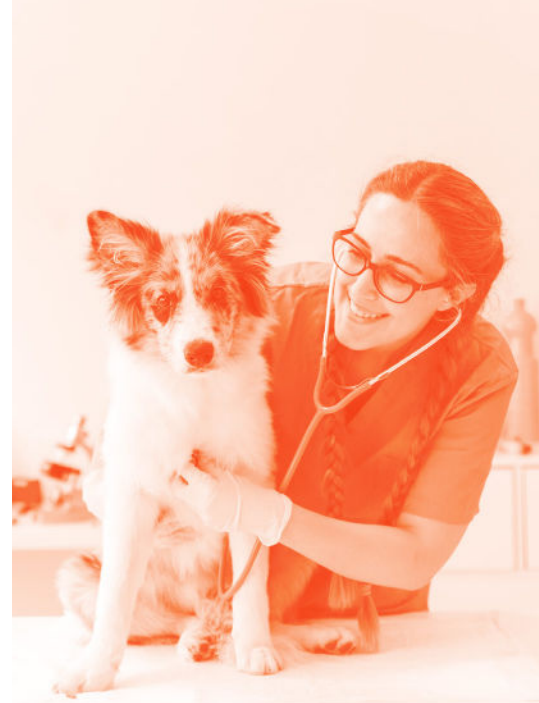


Our educational programs are not only based on the Manitoba curriculum, but they are reviewed and perfected by teachers for teachers.

We want our programs to meet the curriculum needs AND wow your students. That is why we have created a Teacher Advisory Group who works with our animal welfare experts to review, develop and perfect our interactive educational programs. Schedule your presentation today!

WHAT DOES IT TAKE TO BE PART OF THE WHS TEACHER'S ADVISORY GROUP?

- 🐾 Completed teaching degree
- 🐾 Current or retired teacher
- 🐾 Animal welfare expert



Interested in having the WHS come out to your school but wanting a taste of what a WHS lesson looks like? We've got you covered!

We're hosting two Teacher Appreciation sessions here in our shelter where you can experience a Winnipeg Humane Society Field Trip!

October 24, 2020 (10:00AM & 2:00PM)

Spots are limited.

Contact us at education@winnipeghumanesociety.ca to register for you and a guest!



BOOKING INFORMATION

To book your presentation, field trip, or any of our other education-based programs, go online to: winnipeghumanesociety.ca

For more information:

204-982-2026

education@winnipeghumanesociety.ca

Note: Animal ambassadors brought in for presentations are assessed by the Behaviour Department at the Winnipeg Humane Society. If WHS staff are concerned for the safety of the animals or the children, it is within WHS staff authority to remove the animal from the classroom setting. All instructions must be respected and followed to provide a safe and respectful presentation.

“The beautiful thing about learning is that no one can take it from you.”

BB KING

